



BIRDS OF PREY

- Cooper's hawk is a medium-sized hawk native to the North American continent and found from southern Canada to Mexico. This species was formerly placed in the genus Accipiter. As in many birds of prey, the male is smaller than the female.



- The red-tailed hawk is a bird of prey that breeds throughout most of North America, from the interior of Alaska and northern Canada to as far south as Panama and the West Indies. It is one of the most common members within the genus of Buteo in North America or worldwide.



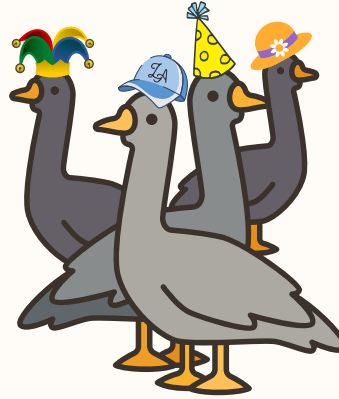
Images by All About Birds



VISIT US AGAIN



ADDRESS: 905 E EL SEGUNDO BLVD, LOS ANGELES, CA 90059



WORK CITED

All information and images were derived from the following sources:

- LA Times - <https://www.latimes.com/entertainment-arts/story/2021-05-20/magic-johnson-park-water-capture-station>
- Wikipedia for respective birds (I.e: Snow Goose, Canada Goose, Black Necked Stilt, American Wigeon, Ruddy Duck, Cooper's Hawk, and Red Tailed Hawk)
- Images by All About Birds, County of LA, Eastside Audubon, National Audubon

The information and images on this birding guide do not belong to East Yard Communities for Environmental Justice



YOUTHINACTION!

Birding at Magic Johnson Park



Image by County of LA



LET'S LEARN ABOUT URBAN BIRDS & THE CONNECTION TO THE COAST



BIRDS OF MAGIC JOHNSON

SHOREBIRD

- Black-necked stilt is a locally abundant shorebird of American wetlands and coastlines. It is found along the California Coast.



Image by All About Birds

DUCKS

- The American wigeon, also known as the baldpate, is a species of dabbling duck found in North America. Formerly assigned to Anas, this species is classified with the other wigeons in the dabbling duck genus Mareca.
- The Ruddy Duck occupies heavily vegetated habitats in North and South America as well as the British Isles, France, and Spain. Ruddy ducks were introduced to the United Kingdom in the 1940s where they have since established a growing population.



Images by All About Birds

GEESE

- The Snow Goose is native to North America. Both white and dark morphs exist, the latter often known as blue goose. Its name derives from the typically white plumage. The species was previously placed in the genus Chen, but is now included in the "gray goose" genus Anser.
- The Canada Goose is a large wild goose with a black head and neck, white cheeks, white under its chin, and a brown body. It is native to the arctic and temperate regions of North America, and it is occasionally found during migration across the Atlantic in northern Europe.

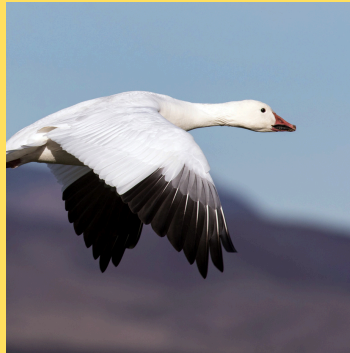


Image by Eastside Audubon

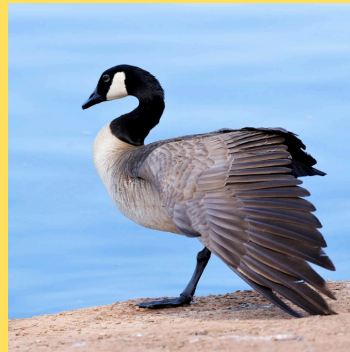


Image by National Audubon



FUN FACT: A Tundra Bean Goose, typically found in the Northern Tundra made its way to Magic Johnson Park. This rare Arctic visitor became a viral sensation among the SoCal birder community.



THE HISTORY OF THE PARK

Originally, the park was an oil storage facility managed by Exxon Mobil called Athens Tank Farm until 1963. In 1970, The Department of Housing and Urban Development made apartments called Ujima Village as a pathway for Black families had a pathway to home ownership. In 2008, tests were done and found that the land was contaminated and families were moved out and the buildings destroyed. After years of environmental remediation, the park was developed.



WHY DO BIRDS COME TO THE PARK?

Magic Johnson Park is part of the Los Angeles river watershed that empties into the Pacific ocean through the LA River and other tributaries. A watershed is a certain area of land that drains water to a certain source. Magic Johnson Park has a lake that is part of this LA river watershed. Rain water is collected into a pumping station at the park. This station then cleans and irrigates the plants at the park. Nature would naturally filter out the rain water but since Los Angeles and the LA River are covered in concrete, the pumping station at Magic Johnson has to do the job that nature does. This man made structure helps keep the coast clean by preventing trash from reaching the ocean.